

# frankk studio

designs by Fran Kaikei





x

**TOP DRAWER**

20-22 FEBRUARY 2022

---

launchpad, B33



# ss/22 catalogue

---



## Hi, hej, ni hao!

Since a young age, Fran's south-east asian heritage and upbringing in London has fuelled her boundless curiosity to explore both 'east' and 'west'. With a background in economics, geography and fine art, she enjoys discovering the interconnectivities between business, design and culture, whilst challenging a west-centric worldview.

Fran's love for asia and drawing has been brewing for some time alongside a less-creative corporate career and many contemplative cups of tea. Solo-travelling in central asia in 2018 overland 14,000km along the old Silk Route, elevated her appreciation for asia to what it is today.

Fran launched **Frankk Studio** in November 2021, to follow her passions and create her own asian-inspired projects, celebrating diversity, exploring social impacts and bringing together communities.



# contents

---

## Introduction

Page 4

## Our vision

Page 6

## Collections

Page 7 - 20

- zodiac heroes
- lucky cats
- neon cats
- hand hearts
- koi fish
- porcelain flowers
- night lights

- Page 8
- Page 10
- Page 12
- Page 14
- Page 16
- Page 18
- Page 20

## Coming soon

Page 21

## SS'22 products & pricing

Page 22

## Contact

Page 23

# our vision

---

## London-based, east inspired.

Inspired by asia's heritage, from Uzbekistan's markets to Hong Kong's skyline, we draw Asian designs for a modern western lifestyle.

With nostalgia and sentiment for asia's past and present, Frankk Studio illustrations look to connect the east and the west.

## be free, funky & proud

Like the wild and beautiful spirit in Asia, Frankk Studio designs express a state of being that is free, prosperous and thriving.

Our designs bring the best of both worlds together into harmony, like Yin & Yang, traditional & minimalist, humble & proud.

## be diverse & belong

Frankk Studio strives to elevate and celebrate diversity to strengthen feelings of belonging, especially for asian immigrants.

We believe that greater cultural exploration and understanding can bring together our diverse society to realise its true potential.

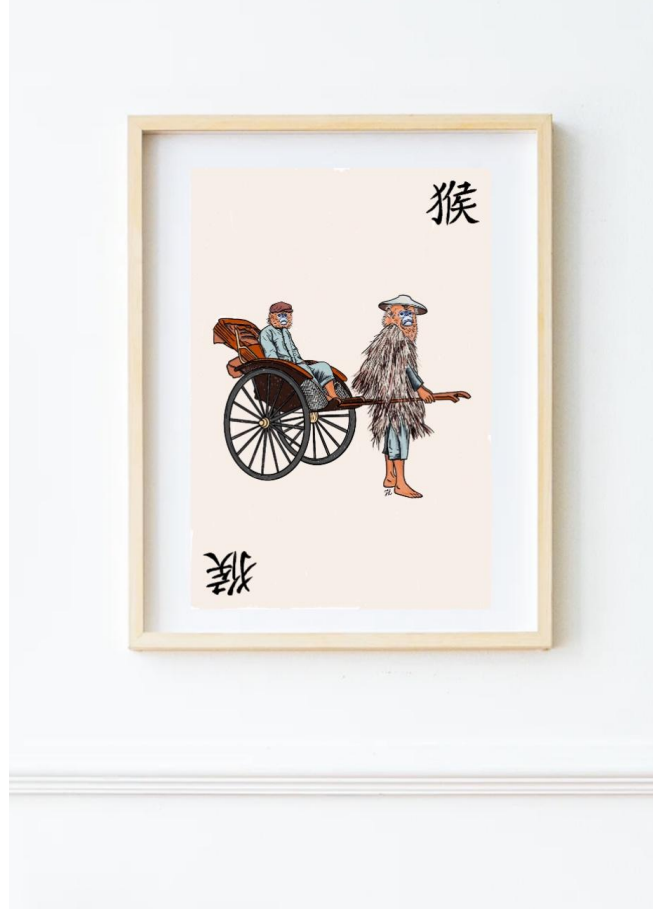
# collections

***'Everything has beauty,  
but not everyone sees it.'***

*- Confucius*

Each of Frankk Studio's unique collections stem from core beliefs and values in asian culture.

From The Chinese Zodiacs to Japanese Lucky Cats, whether you're familiar or new, anyone can relate to the spiritual meanings associated to them as an insightful guide through one's life.





## zodiac heroes

An ode to Chinese Astrology, where each of the twelve Chinese Zodiacs have a unique character and distinct qualities to be embraced.

Thoughtfully designed with characters in mind, every one of us can identify with at least one zodiac hero, based on our year of birth. There is vast wisdom to uncover from Chinese Astrology, an art that often surprises with what it understands about ourselves and our future.

This product is a high-quality giclée print of an original Frankk Studio digital illustration. A limited edition collection of 50, signed, numbered and hand-finished with deckled edges.



rat



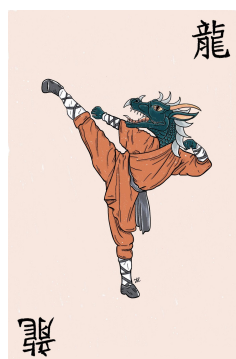
ox



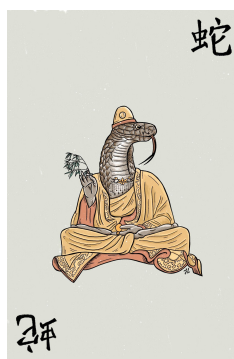
tiger



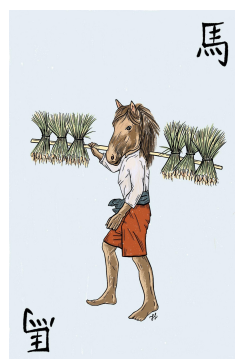
rabbit



dragon



snake



horse



goat



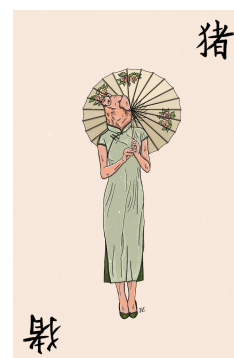
monkey



rooster



dog



pig

## Product info

High-quality giclée print

Limited edition of 50, signed and numbered, with a handmade deckled-edge finish

Printed on 290gsm Hahnemühle Bamboo paper (90% Bamboo & 10% Cotton)

Prints are provided unframed, in a clear sleeve with cardboard-backed packaging

## Size options

130 x 185 mm / 5 x 7.2" (fits A5)

165 x 235 mm / 6.5 x 9.2" (fits A4)





## lucky cats

The lucky cat, or Japanese Maneki-Neko, is believed to bring luck and prosperity for people, their home, workplace or business.

As well as welcoming you into many shopfronts and restaurants all around Asia, Frankk Studio believes they will be the perfect addition to your walls as well.

This product is a high-quality giclée print of an original Frankk Studio digital illustration, available in 4 classic colours.



blue



red



green



black & white

## Product info

High-quality giclée print

Printed on 290gsm Hahnemühle Bamboo paper  
(90% Bamboo & 10% Cotton)

Prints are provided unframed, in a clear sleeve with  
cardboard-backed packaging

Open edition

## Size options

150 x 210 mm / 5.8 x 8.3" (A5)

210 x 300 mm / 8.3 x 11.7" (A4)



## neon cats

With never-ending adoration for Maneki-Neko, we have created a twilight-twin to our original lucky cat.

Inspired by neon lights, famous in the city of Hong Kong, the neon cat will brighten up any room it has the opportunity to 'shine' in.

This product is a high-quality giclée print of an original Frankk Studio digital illustration, available in 8 outstanding neon colours.





*peony*



*gold*



*porcelain*



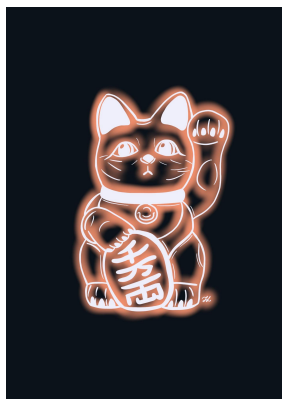
*lantern*



*jade*



*plum*



*mandarin*



*turquoise*

## Product info

High-quality giclée print

Printed on 290gsm Hahnemühle Bamboo paper  
(90% Bamboo & 10% Cotton)

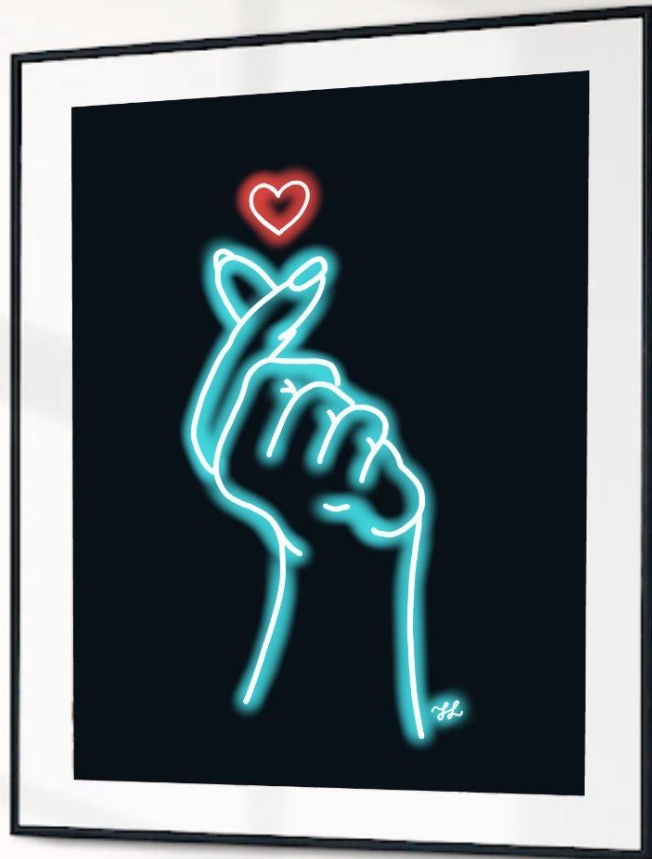
Prints are provided unframed, in a clear sleeve  
with cardboard-backed packaging

Open edition

## Size options

150 x 210 mm / 5.8 x 8.3" (A5)

210 x 300 mm / 8.3 x 11.7" (A4)

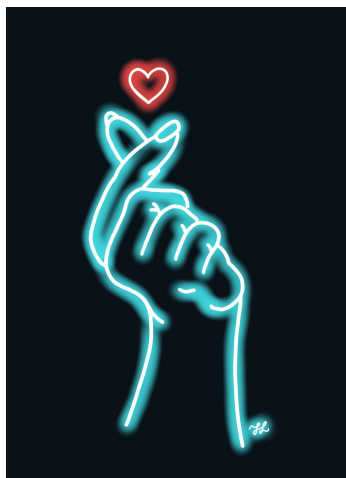


## hand hearts

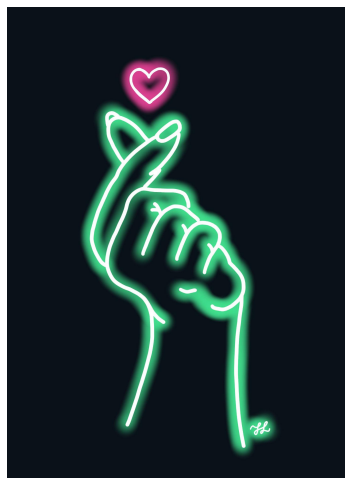
Made famous in South Korea, the crossing of the thumb and index finger signifies an invisible heart.

With the rise of K-Pop bands and Korean TV-series with western audiences, this gesture is becoming a go-to sign for love.

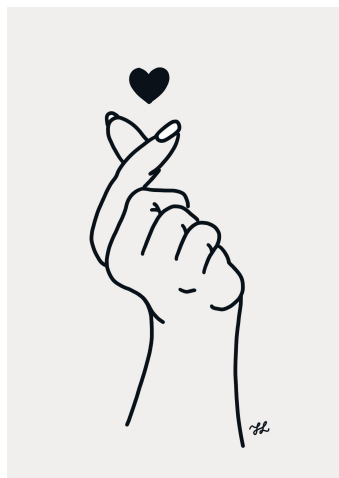
Continuing the neon series, this product is a high-quality giclée print of an original Frankk Studio digital illustration, available in 4 outstanding neon colours and 1 black and white original.



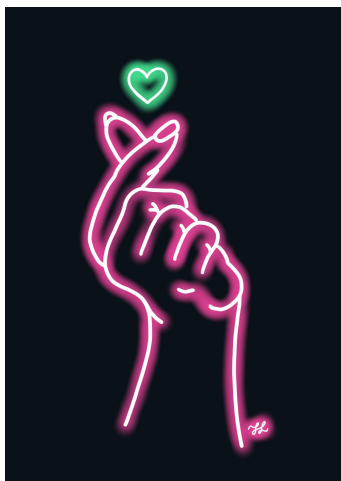
porcelain



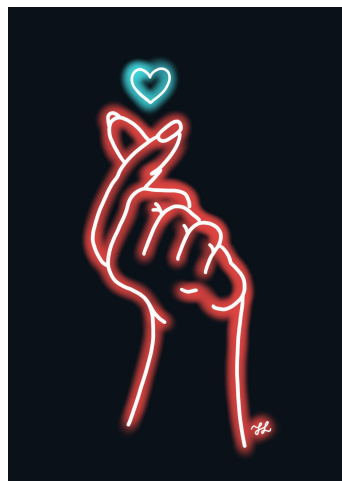
jade



black & white



peony



lantern

### Product info

High-quality giclée print

Printed on 290gsm Hahnemühle Bamboo paper  
(90% Bamboo & 10% Cotton)

Prints are provided unframed, in a clear sleeve with  
cardboard-backed packaging

Open edition

### Size options

150 x 210 mm / 5.8 x 8.3" (A5)

210 x 300 mm / 8.3 x 11.7" (A4)



## koi fish

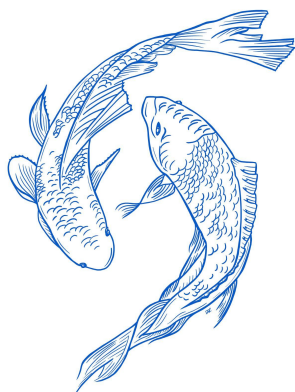
According to Feng Shui, a spiritual form of arrangement and object placement within the home, having the spirit of koi carp nearby will attract fortune, luck and spiritual abundance.

These koi have been designed with the ebb and flow of Yin & Yang, representing the harmony of life. While the koi resembles strength and perseverance, the swimming pair symbolises love and passion.

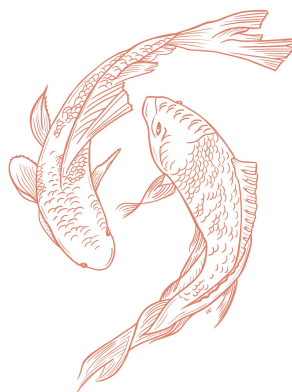
This product is a high-quality giclée print of an original Frankk Studio digital illustration, available in 6 classic colours.



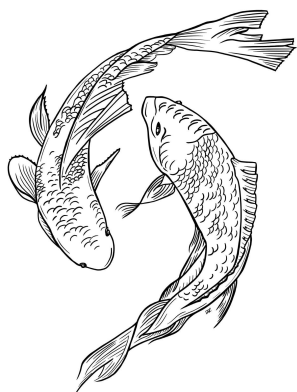
green & red



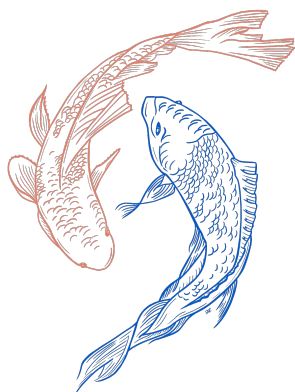
blue



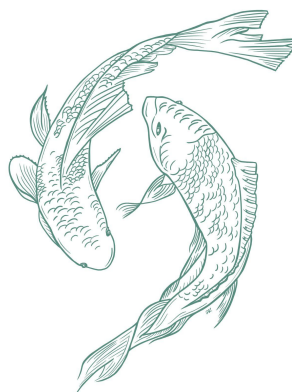
red



black & white



red & blue



green

## Product info

High-quality giclée print

Printed on 290gsm Hahnemühle Bamboo paper  
(90% Bamboo & 10% Cotton)

Prints are provided unframed, in a clear sleeve with  
cardboard-backed packaging

Open edition

## Size options

150 x 210 mm / 5.8 x 8.3" (A5)

210 x 300 mm / 8.3 x 11.7" (A4)



## porcelain flowers

Beautiful Porcelain and Paisley patterns originally travelled along the old Silk Road onto destinations all around the continent. From classic blues & whites, to vibrant pinks & yellows, these patterns still strongly influence homewares and clothing today.

This collection celebrates the trendsetting patterns and diversity of women from a range of asian regions. These designs intentionally focus on the art of porcelain and subdue colour of skin.

This product is a high-quality giclée print of an original Frankk Studio digital illustration, available in 6 flourishing designs.





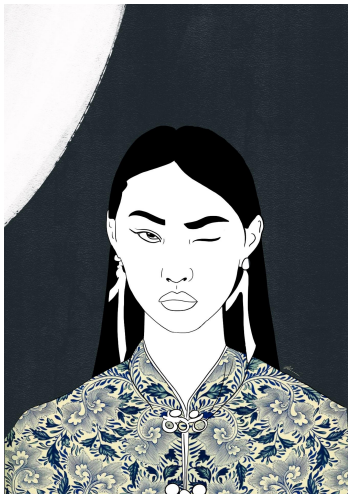
poppy



viola



rosa



lily



blossom



flora

### Product info

High-quality giclée print

Printed on 290gsm Hahnemühle Bamboo paper  
(90% Bamboo & 10% Cotton)

Prints are provided unframed, in a clear sleeve with  
cardboard-backed packaging or tube.

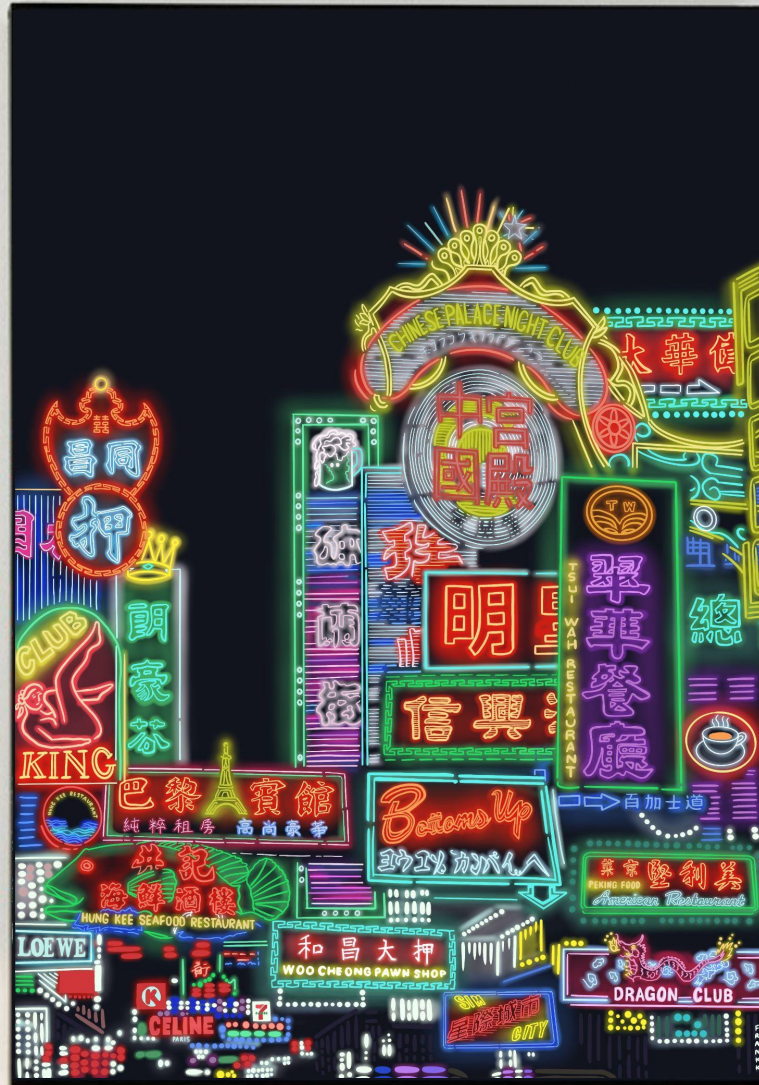
Open edition

### Size options

210 x 300 mm / 8.3 x 11.7" (A4)

594 x 841 mm / 23.4 x 33.1" (A1)





## night lights

With an eruption of neon colours, inspired by Hong Kong's buzzing nightlife, this new series showcases its existing and vintage neon signs.

The craft that has made this city famous, is slowly fading out. We want to preserve the memory of these bright and beautiful neon signs that play such an iconic role in Hong Kong's visual identity.

This product is a high-quality giclée print of an original Frankk Studio digital composition. More vibrant designs coming soon in Q1 2022...



# coming soon

This is only the beginning for Frankk Studio, and we look forward to returning to **Top Drawer AW'22** to share more new exciting products.

Until then, we'll continue creating new designs, exploring new print styles and growing our community.

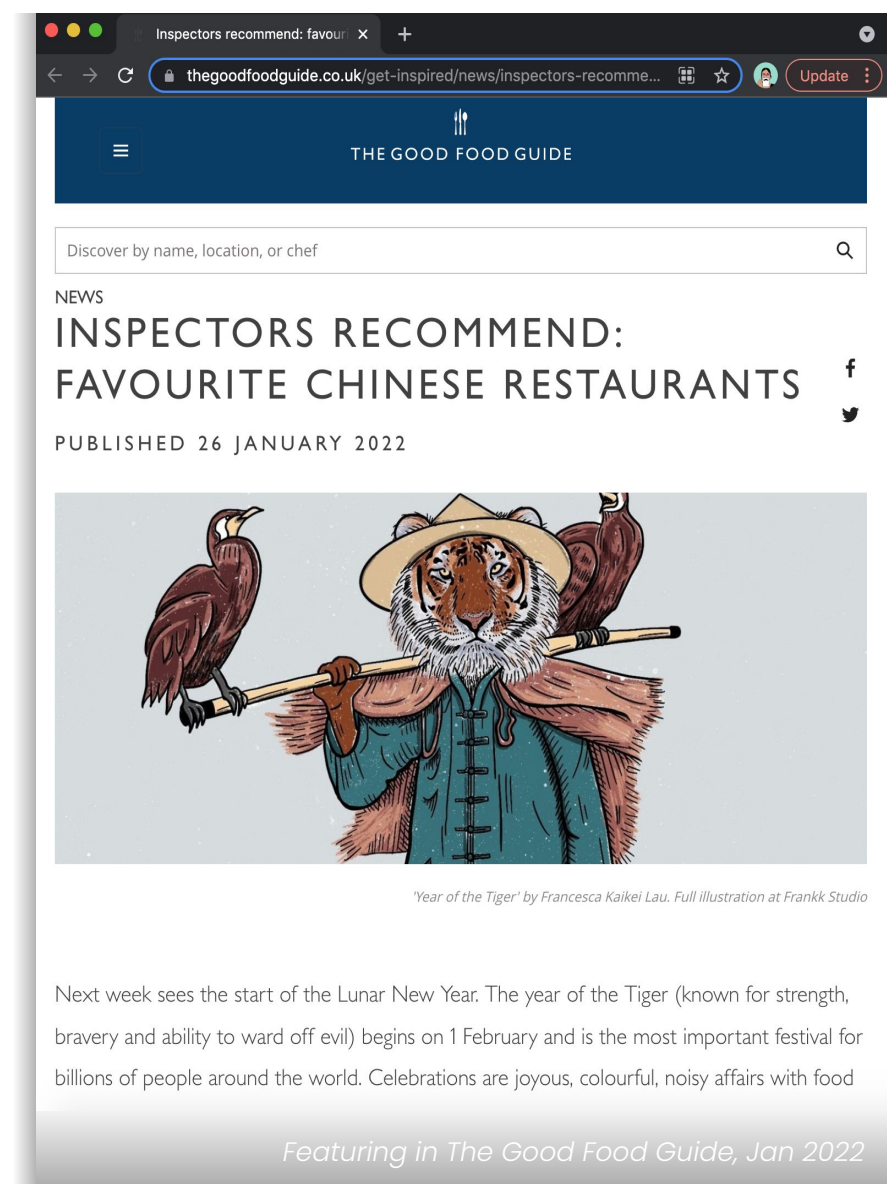
## Creating new original designs

- neon signs
- porcelain landscapes
- and more...

## Expanding our product range

- homeware
- clothing & accessories
- new printing methods and 'canvases'

## Extending our partnerships & collaborations





# frankk studio

**SS'22 wholesale products & pricing**

London-based, east-inspired design & original art prints

w: [www.frankk.studio](http://www.frankk.studio)

e: [frankkstudio@gmail.com](mailto:frankkstudio@gmail.com)

m: +44 (0)7503 928191



ZH\_RAT

ZH\_OX

ZH\_TIG

ZH\_RAB



ZH\_DRA

ZH\_SNA

ZH\_HOR

ZH\_GOA



ZH\_MON

ZH\_ROO

ZH\_DOG

ZH\_PIG

## ZODIAC HEROES

Limited Edition of 50 per design, giclée print, signed & numbered. 290gsm bamboo paper with hand finished deckled edges.

**Size: 130 x 185 mm (fits A5)**

GBP 20/ RRP 40

**Size: 165 x 235 mm (fits A4)**

GBP 30/ RRP 60



PF\_POP

PF\_VIO



PF\_LIL

PF\_BLO



PF\_ROS

PF\_FLO

## PORCELAIN FLOWERS

Original giclée print, 290gsm bamboo paper.

**Size: A4**

GBP 25/ RRP 50

**Size: A1**

GBP 140/ RRP 280



KF\_BLU

KF\_G/R



KF\_RED

KF\_R/B



KF\_GRE

KF\_BW

## KOI FISH | LUCKY CATS | NEON CATS | HAND HEARTS

Original giclée print  
290gsm Hahnemühle bamboo paper.

**Size: A5**

GBP 17/ RRP 35

**Size: A4**

GBP 25/ RRP 50



LC\_BLU

LC\_RED



LC\_GRE

LC\_BW



HH\_BW



NC\_PEO

NC\_GOL

NC\_POR

NC\_LAN

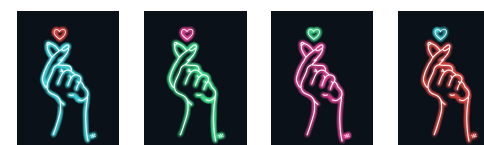


NC\_JAD

NC\_PLU

NC\_MAN

NC\_TUR



HH\_POR

HH\_JAD

HH\_PEO

HH\_LAN



NL\_01

## NIGHT LIGHTS

Original giclée print, 290gsm bamboo paper.

**Size: A4**

GBP 25/ RRP 50

**Size: A1**

GBP 140/ RRP 280

**minimum orders** = GBP 150 | **carriage paid** = GBP 250 (note: if under or international, postage will be calculated upon order)

**shipping** = Dispatch within 7-9 working days. Prints individually packed in clear compostable sleeve with cardboard backing. Delivery by Track & Trace Royal Mail 48hr service.

Offering an extra **5% discount**, when you purchase a complete series (e.g. code: ZH, PF, KF, LC, NC, HH, NL)

# contact

---

If you would like to make a purchase, collaborate or have a query, please get in touch - we'd love to hear from you;

**Francesca Kaikei Lau**

**e:** [frankkstudio@gmail.com](mailto:frankkstudio@gmail.com)

**t:** +44 (0)7503 928191

Please visit our website and social pages to stay in touch on our exciting journey;

 [www.frankk.studio](http://www.frankk.studio)

 [@frankk.studio](https://www.instagram.com/frankk.studio)

 [facebook.com/frankkstudio](https://www.facebook.com/frankkstudio)





**frankk studio**

designs by **Fran Kaikei**